

# State of Wyoming Corner Record

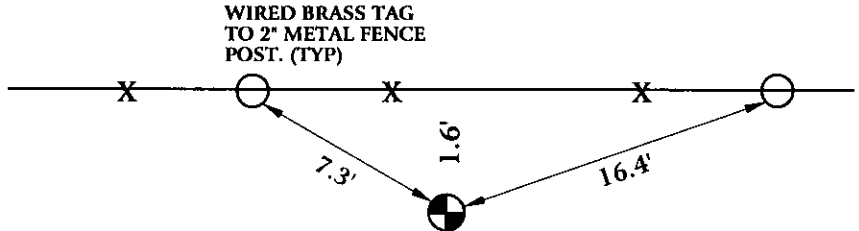
(In compliance with the CORNER PERPETUATION AND FILING ACT, Wyoming Statutes, 1997 Section 33-29-140 et. seq., and the Rules and Regulations of the Board of Professional Engineers and Professional Land Surveyors)

Reverse side of this form may be used if more space is needed.

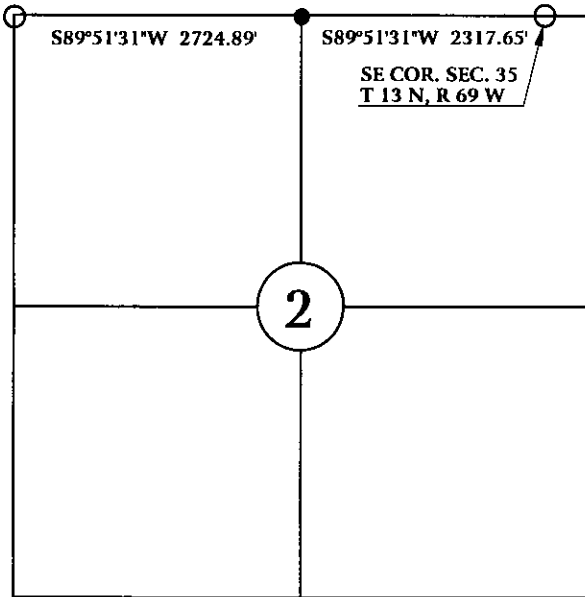
Record of original survey and citation of source of historical information (if corner is lost or obliterated). Description of corner monumentation evidence found and/or monument and accessories established to perpetuate the location of this corner. Sketch of relative location of monument, accessories, and reference points with course and distance to adjacent corner(s) (if determined in this survey). Method and rationale for reestablishment of lost or obliterated corner.

NO ORIGINAL CALL FOR THIS CORNER.

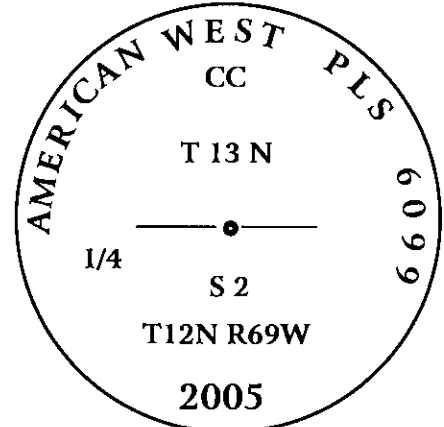
SET 3/4" X 30" REBAR WITH 3 1/4" ALUMINUM CAP P.L.S. 6099, AND SET TIES AS SHOWN BELOW.



## Monument location



## Monument Inscription



3 1/4" ALUMINUM CAP ON  
3/4" X 30" REBAR

Date of Field Work: April 20, 2005

Office Reference: GALLEGOS05.pro

## Cross Index Plat

1	2	3	4	5	6	7	8	9	10	11	12	13	14	15	16	17	18	19	20	21	22	23	24	25	
A																									A
B	6	5	4	3	2	1																			B
C																									C
D																									D
E																									E
F																									F
G	7	8	9	10	11	12																			G
H																									H
I																									I
J																									J
K																									K
L	18	17	16	15	14	13																			L
M																									M
N																									N
O																									O
P	19	20	21	22	23	24																			P
Q																									Q
R																									R
S																									S
T	30	29	28	27	26	25																			T
U																									U
V																									V
W																									W
X																									X
Y																									Y
Z	31	32	33	34	35	36																			Z
1	2	3	4	5	6	7	8	9	10	11	12	13	14	15	16	17	18	19	20	21	22	23	24	25	

### Firm/Agency, Address

CHARLES H. RUSSELL P.L.S. 6099  
AMERICAN WEST LAND SURVEYING CO.  
29 SOUTH 4TH AVENUE  
BRIGHTON, CO 80601

This corner record was prepared  
by me or under my direction  
and supervision.

SEAL & SIGNATURE

### Telephone Number:

303-659-1532



RECORDED 6/22/2005 AT 12:35 PM REC# 420194 BK# 1888 PG# 1064  
DEBRA K. LATHROP, CLERK OF LARAMIE COUNTY, WY PAGE 1 OF 1

Corner Name: North 1/4 Corner, Section 2, T 12 N, R 69 W, 6th P.M.

Cross-Index No.: A-19

County: Laramie